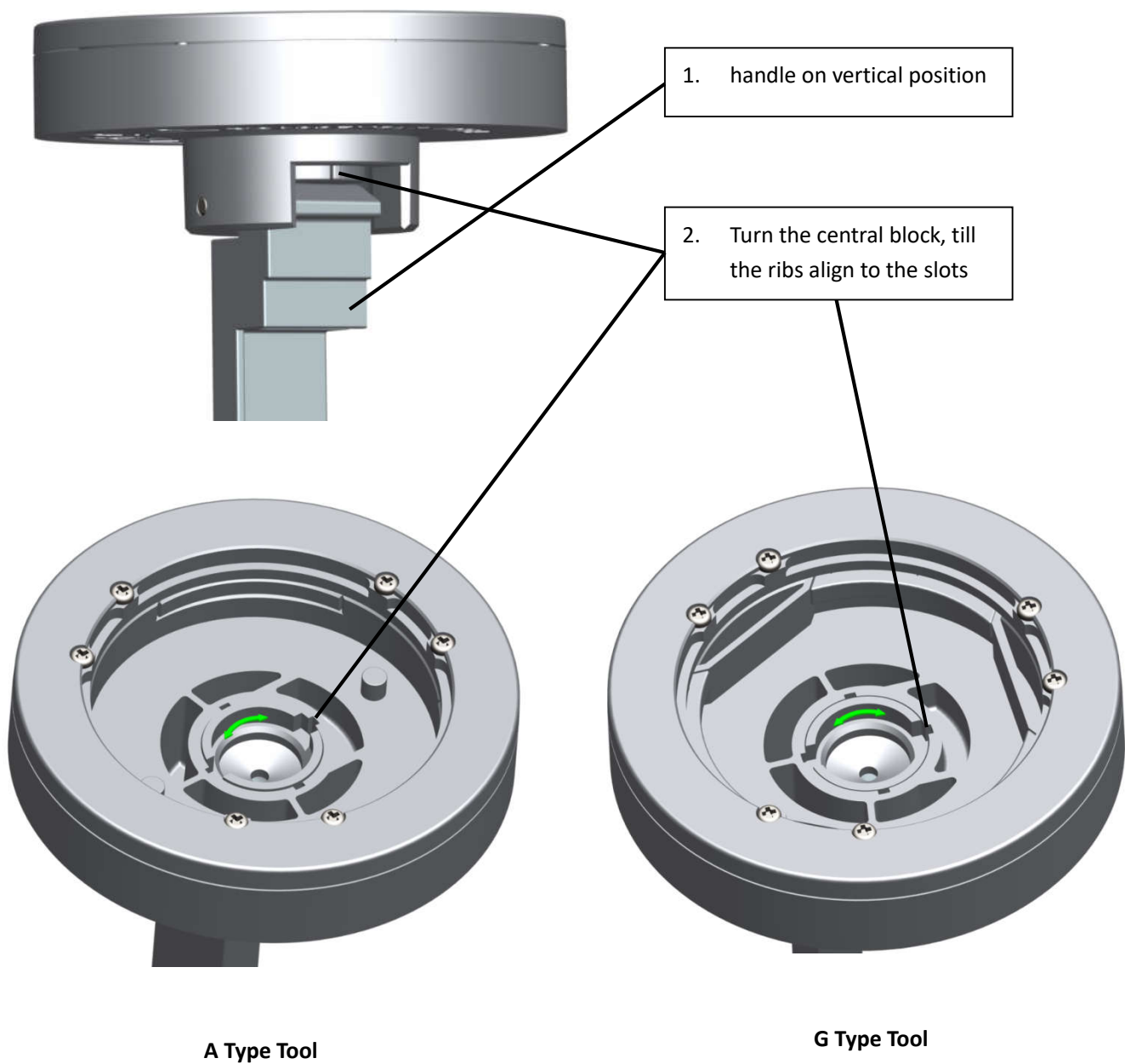


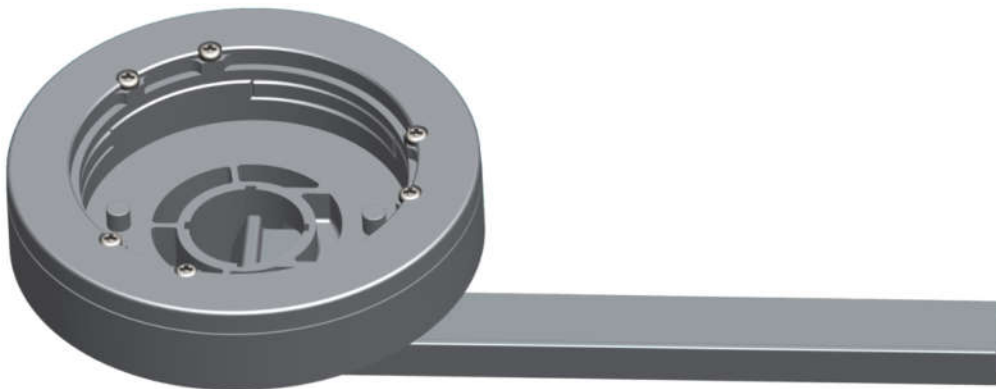
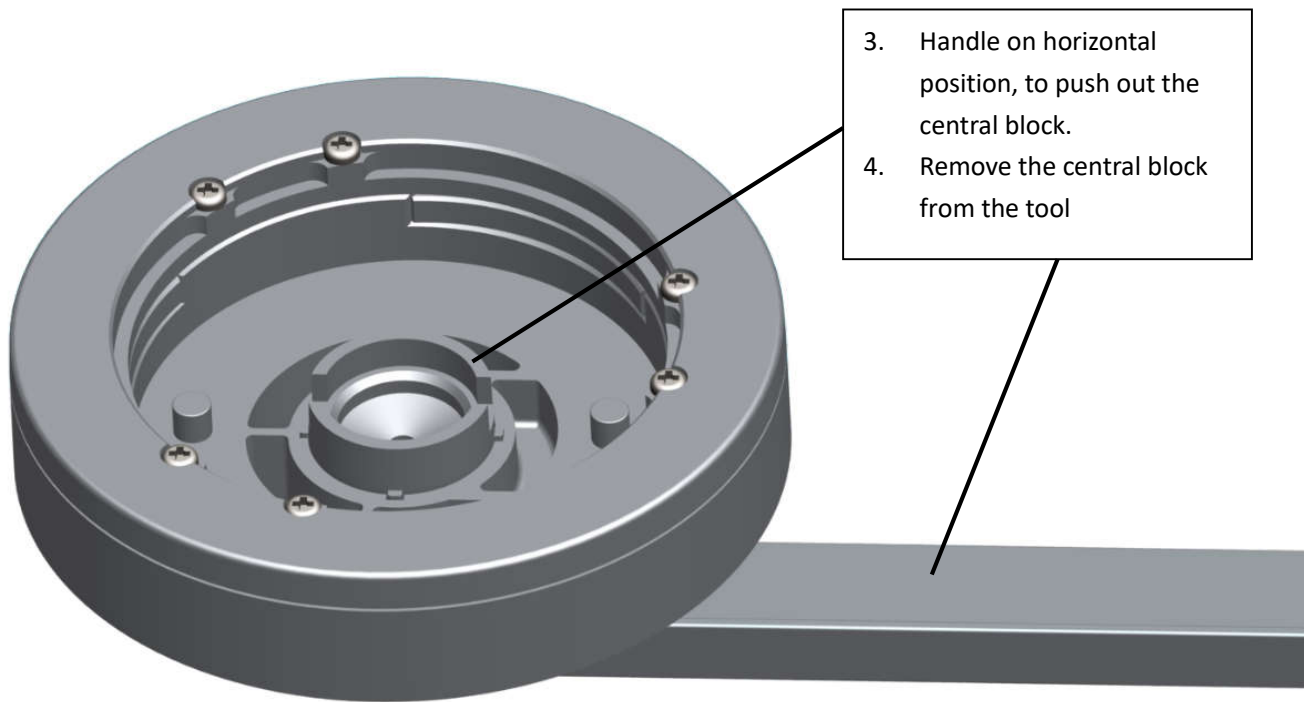
Assembly and Disassembly Tool for A & G Type Spear

The Assembly tool and Disassembly tool for A & G type spear is different:

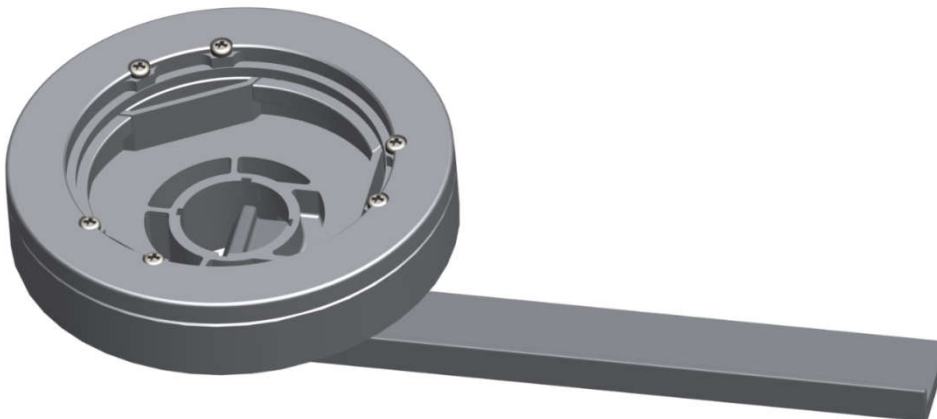
- Assembly tool: without the central block inside the tool, as the valve can not be opened by the central block during assembly, otherwise, the air will go into the inner bag.
- Disassembly tool: with the central block inside the tool, so that the valve can be opened when push down the handle, to exhaust the gas and depressurize the keg before unscrew the spear, for safety purpose.

Tool for Assembly:





A Type Assembly Tool

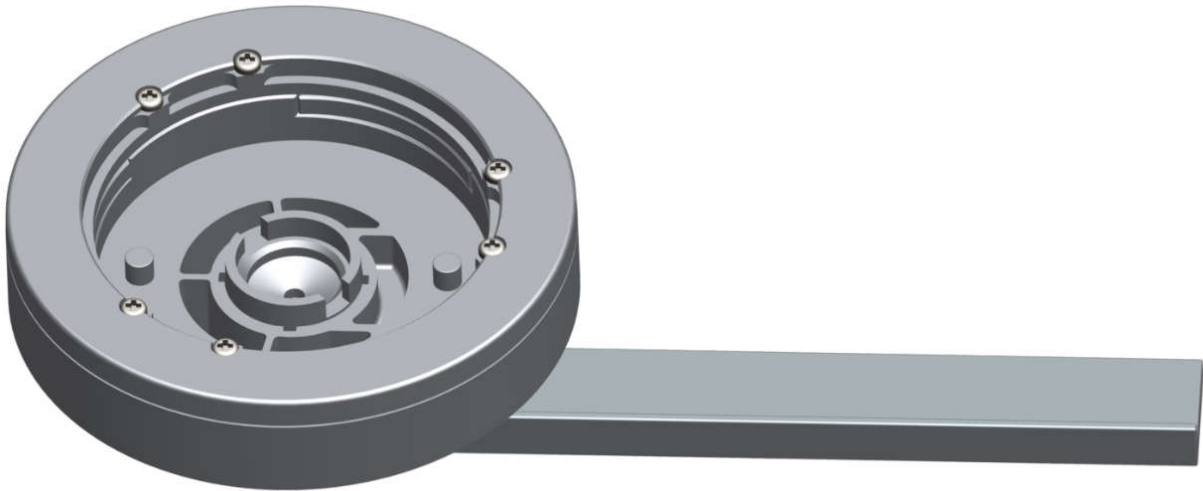


G Type Assembly Tool

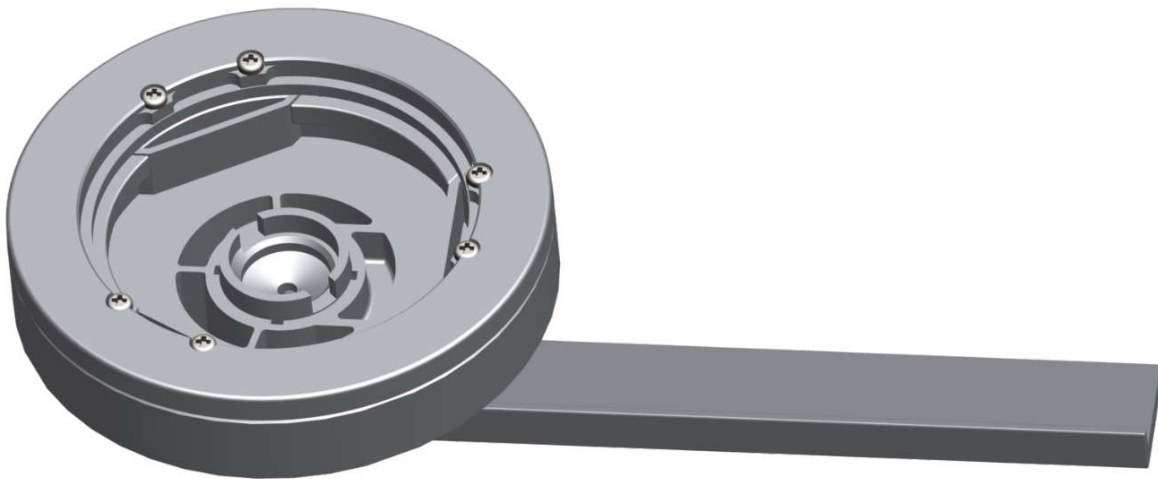
Tool for Disassembly:

The disassembly tool need to have the central block inside the tool, to depressurize the keg prior unscrew the spear.

To install back the central block into the tool, the process is just opposite to the above process for removing the blocks.



A Type Disassembly Tool

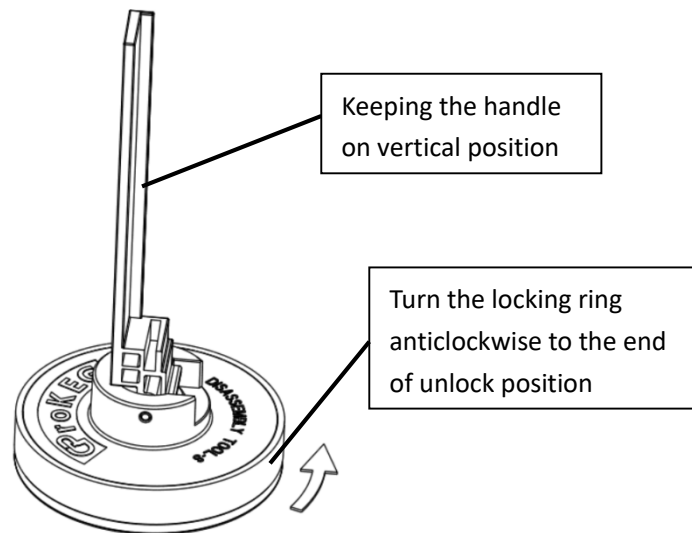


G Type Disassembly Tool

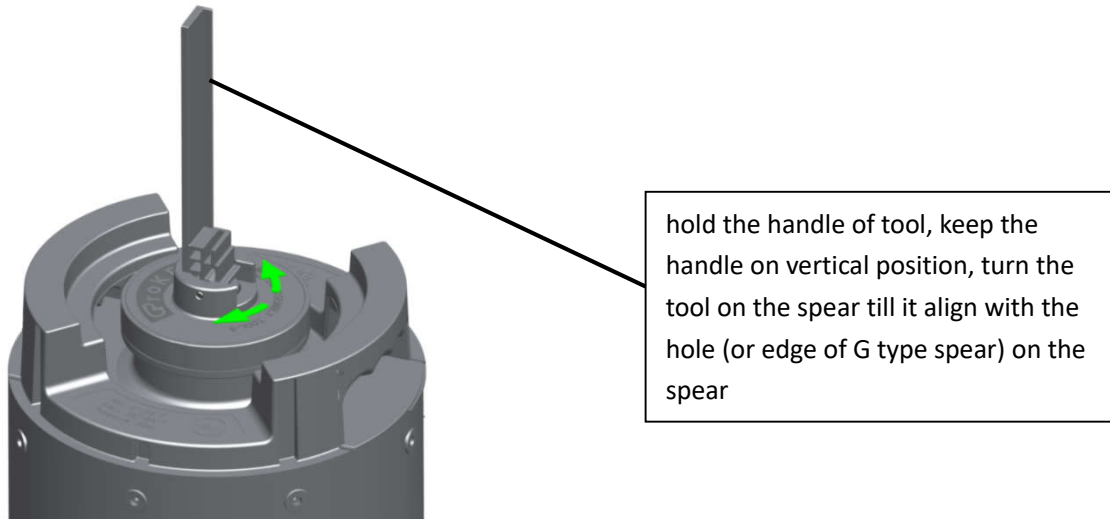
Manual Disassembly and Inner Bag Extracting – A & G type spear

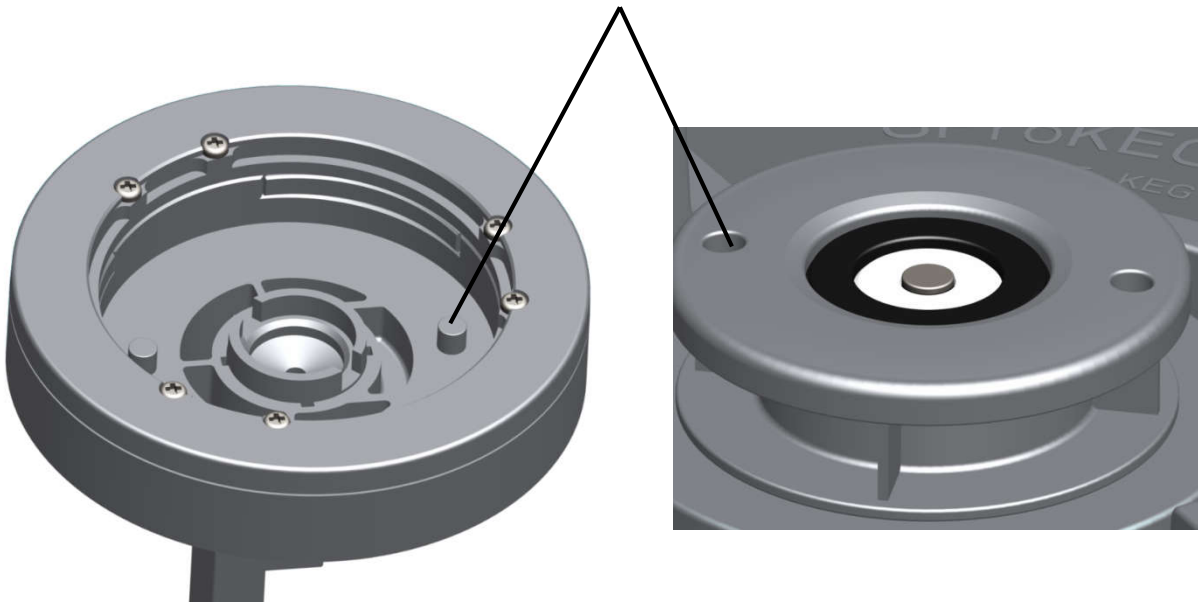
Please use disassembly tool for spear unscrewing

1. turn the locking ring on unlock position

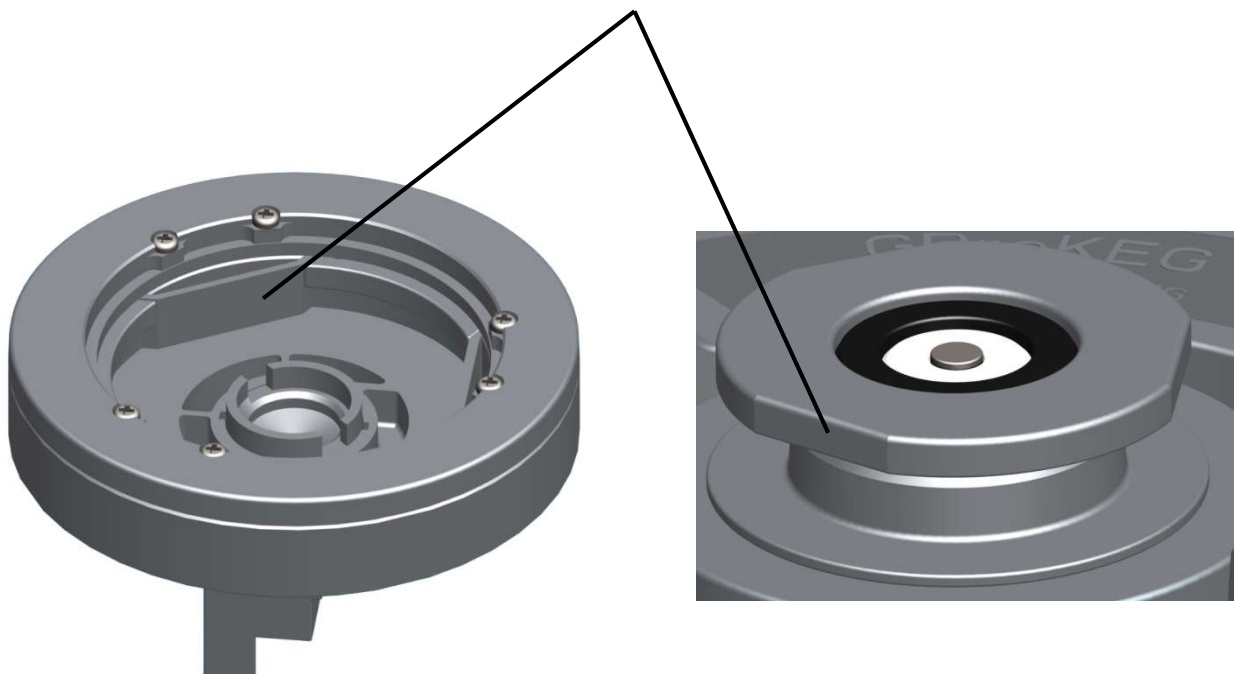


2. aligning the disassembly tool on the spear



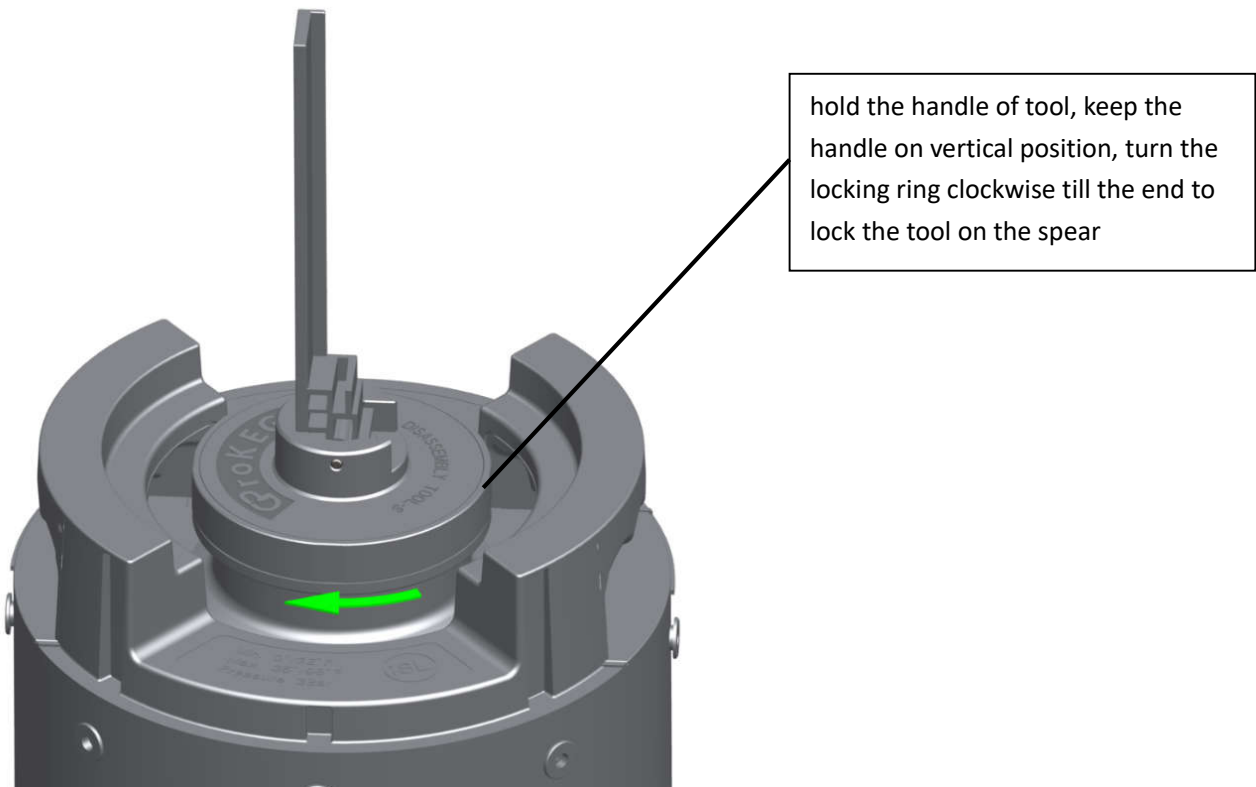


A Type spear

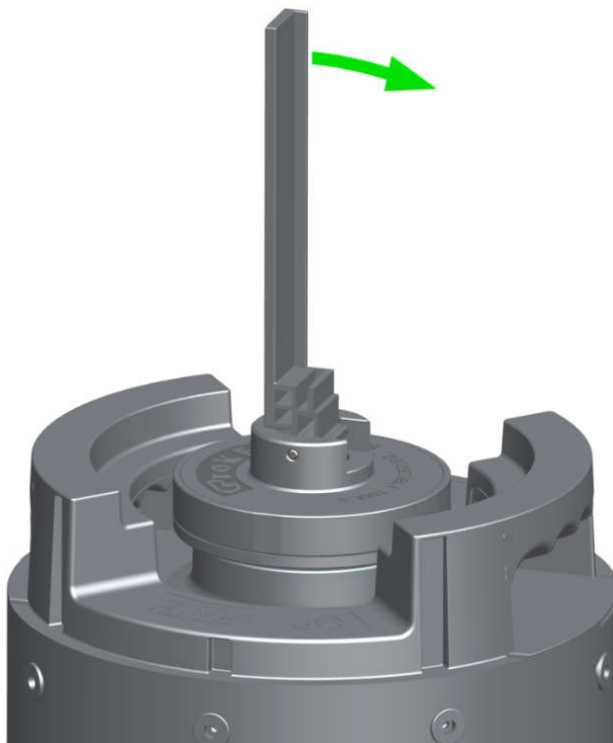


G Type spear

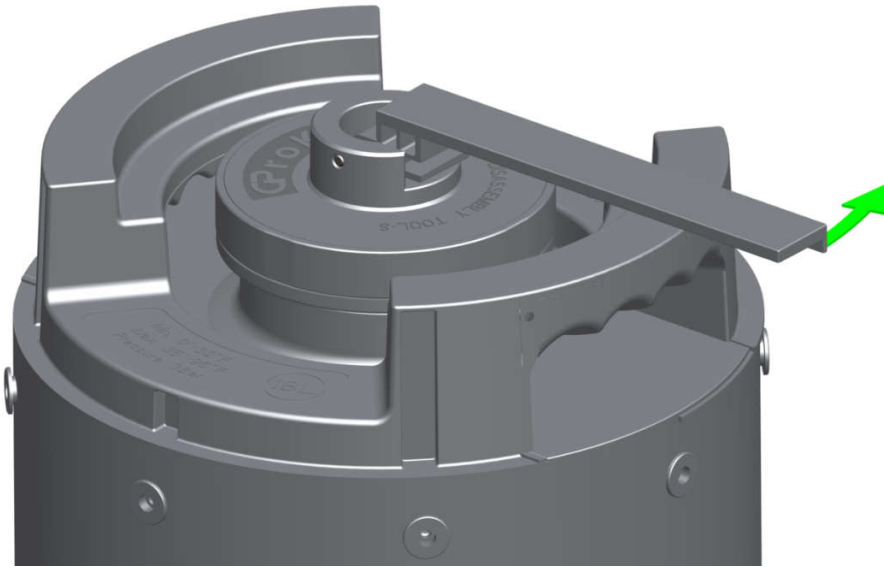
3. Locking the disassembly tool on the spear



4. turn and pull down the handle of the tool for 90 degrees, release the pressure from the keg till no gas comes out from the keg



5. hold the handle of tool, turn the tool and spear anticlockwise till the spear unscrewed from the keg



6. turn the locking ring of the tool anticlockwise till the end, to unlock the tool and take the tool off from the spear; pull the inner bag out from the keg.



Pulling inner bag out from the keg.

Tips: can stand on the keg to hold the keg and pull the inner bag out.

New spear & inner bag assembly (manually) – A & G type spear

Please use assembly tool (without central block inside the tool) for A & G type spear screwing.

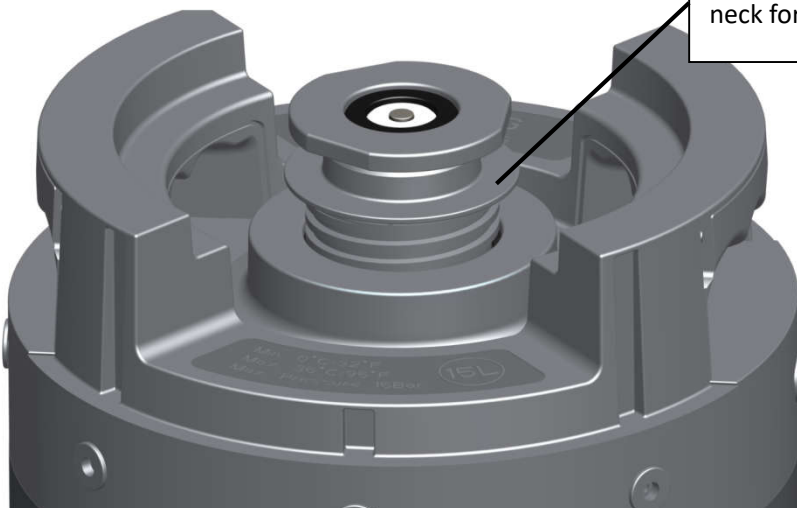
1. insert new spear/bag into the keg carefully, without any scratch and/or damage of the inner bag, screw the spear for 1~2 turns on the keg neck; check if any leakage of the inner bag before insert it into the keg.



Check the new bag to ensure the bag film wrapped on the tube tightly, no leakage of inner bag

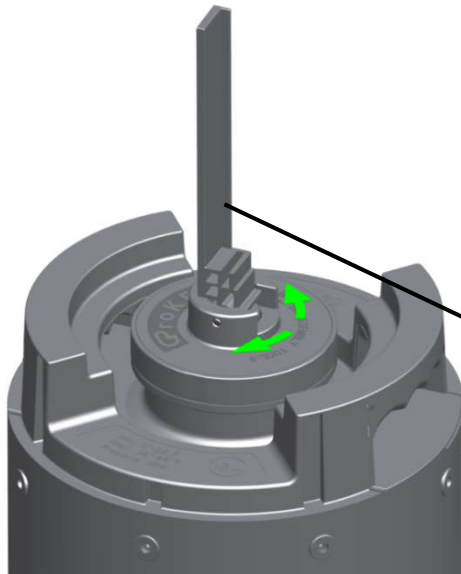


Insert the bag into the keg carefully, make sure not scratch and damage of the inner bag during inserting

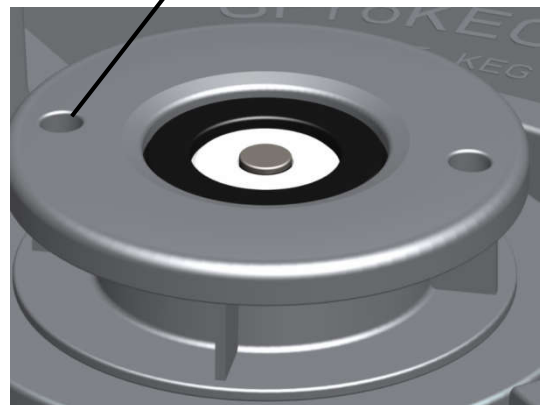
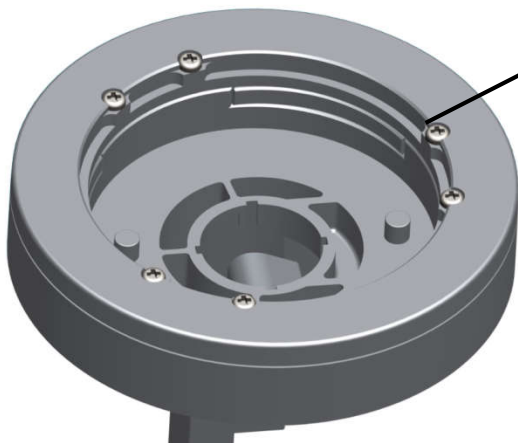


Screw the spear in keg neck for 1 or 2 turns

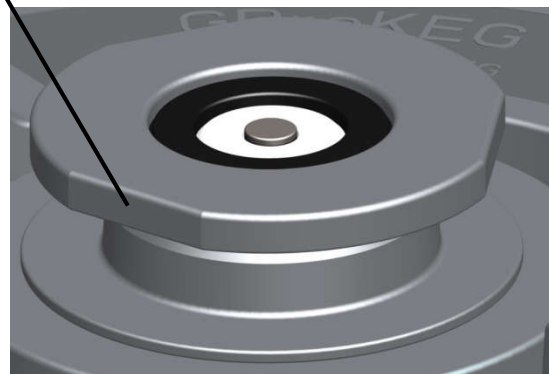
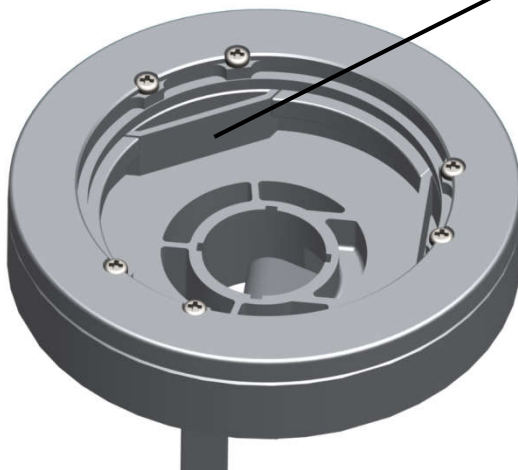
2. align the assembly tool on the spear.



hold the handle of tool, keep the handle on vertical position, turn the tool on the spear till it align with the hole on the spear

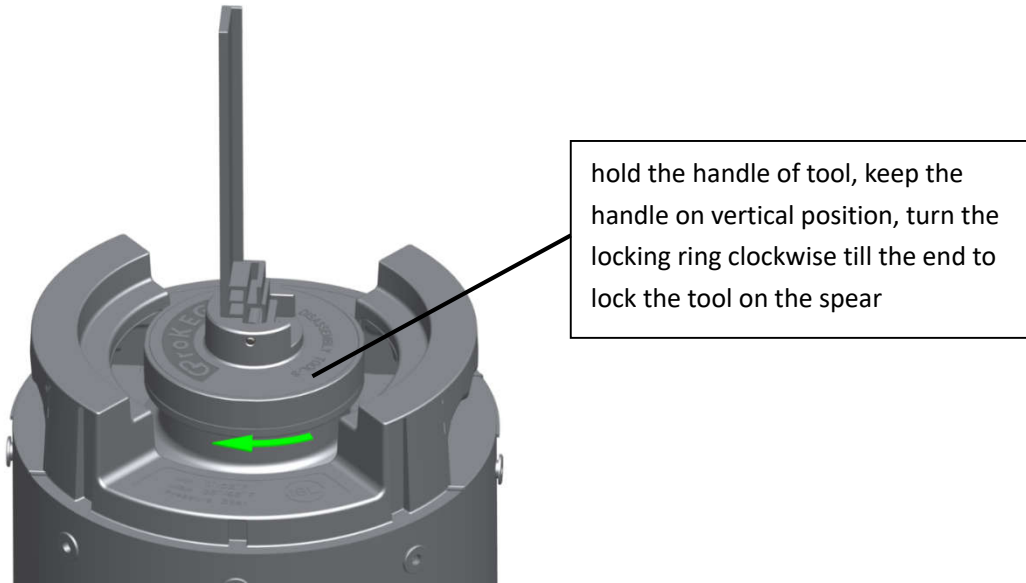


A Type spear

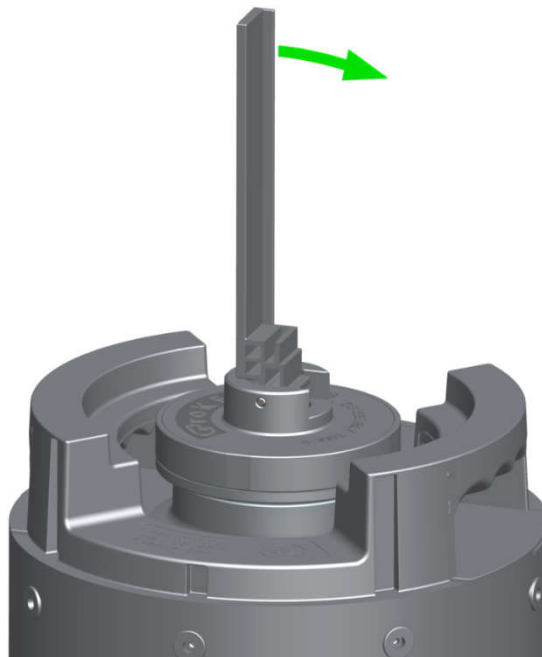


G Type spear

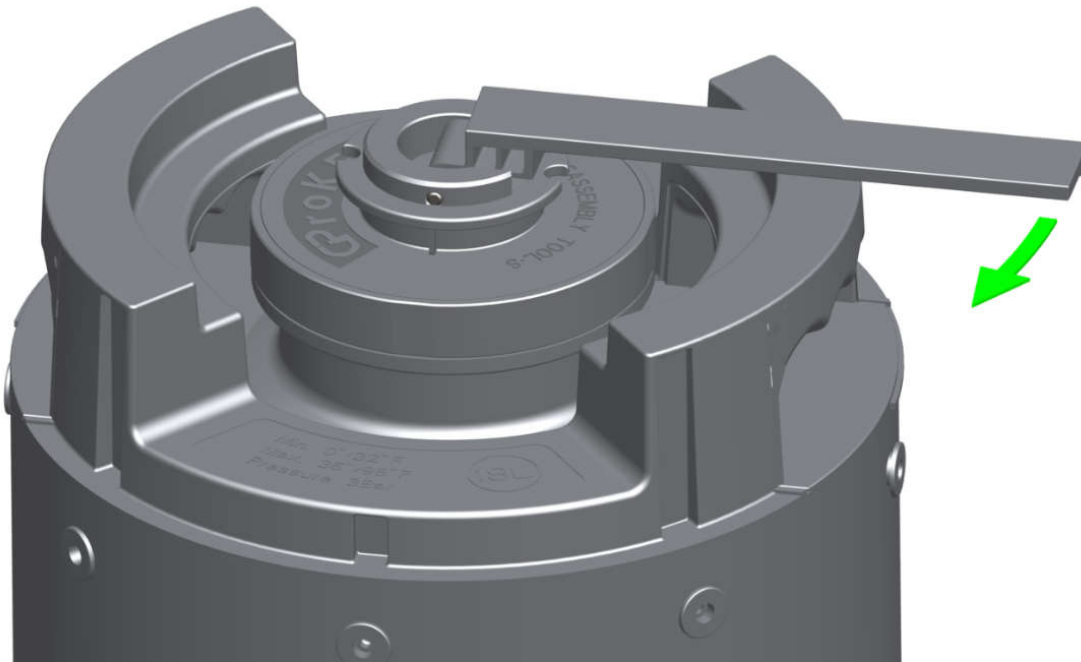
3. locking the assembly tool on the spear



4. turn and pull down the handle of the tool for 90 degrees



5. hold the handle of tool, turn the tool and spear clockwise till the spear screwed tightly on the keg



6. turn the locking ring of the tool anticlockwise till the end, to unlock the tool and take the tool off from the spear.
The keg is ready for filling.