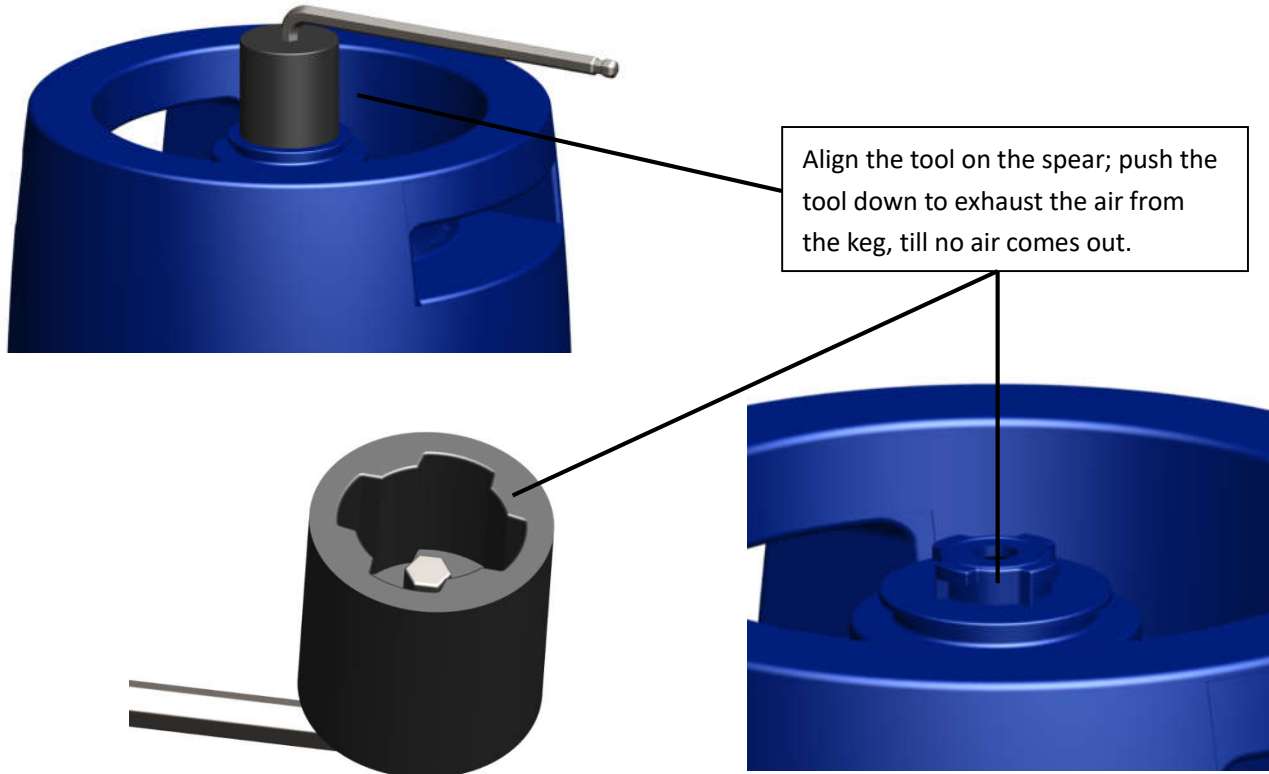
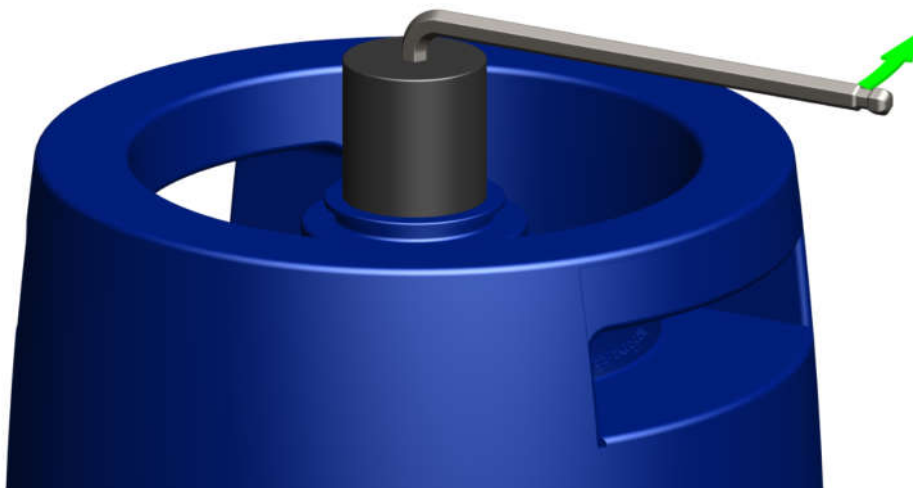


### Manual Disassembly and Inner Bag Extracting – 5L Party Keg

1. aligning and pushing down to mount the assembly/disassembly tool on the spear; hold the tool to depressurize the keg (to exhaust the air from the keg)



2. hold the key of tool, turn the tool and spear anticlockwise till the spear unscrewed from the keg



3. take the tool off from the spear; pull the inner bag out from the keg.



Pull out inner bag from the keg.

#### New spear & inner bag assembly (manually) – Party keg

1. insert new spear/bag into the keg carefully, without any scratch and/or damage of the inner bag, screw the spear for 1~2 turns on the keg neck; check if any leakage of the inner bag before insert it into the keg.



Check the new bag to ensure the bag film wrapped on the tube tightly, no leakage of inner bag

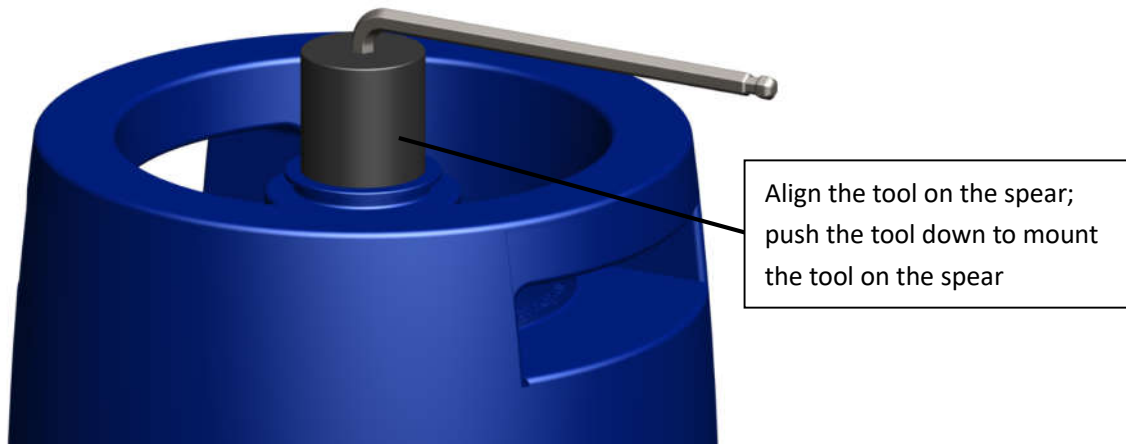


Insert the bag into the keg carefully, make sure not scratch and damage of the inner bag during inserting

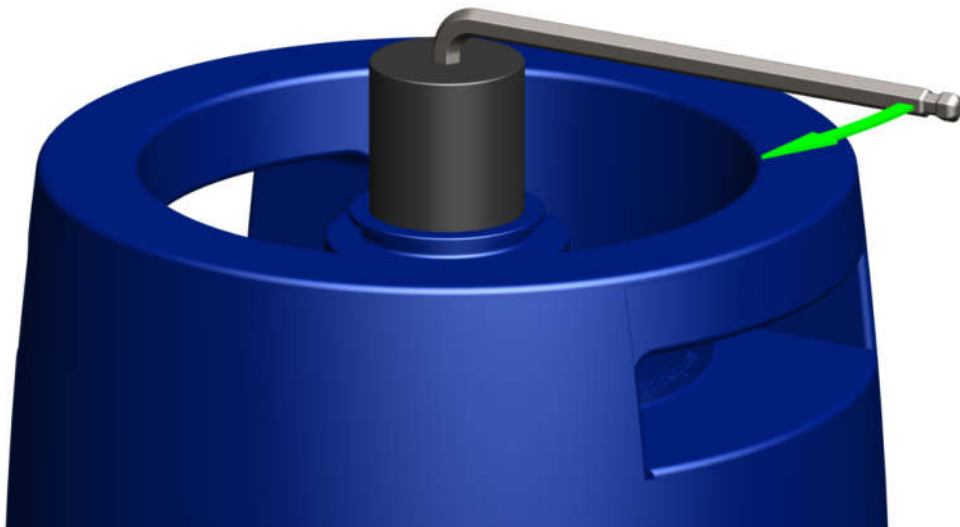


Screw the spear in keg neck for 1 or 2 turns

2. aligning and pushing down to mount the assembly/disassembly tool on the spear.



3. hold the key of tool, turn the tool and spear clockwise till the spear screwed tightly on the keg



4. take the tool off from the spear. The keg is ready for filling.